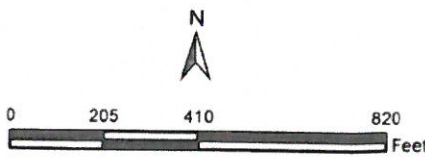


Sources: Esri, HERE, Garmin, Intermap, increment P Corp., GEBCO, USGS, FAO, NPS, NRCAN, GeoBase, IGN, Kadaster NL, Ordnance Survey, Esri Japan, METI, Esri China (Hong Kong), (c) OpenStreetMap contributors, and the GIS User Community

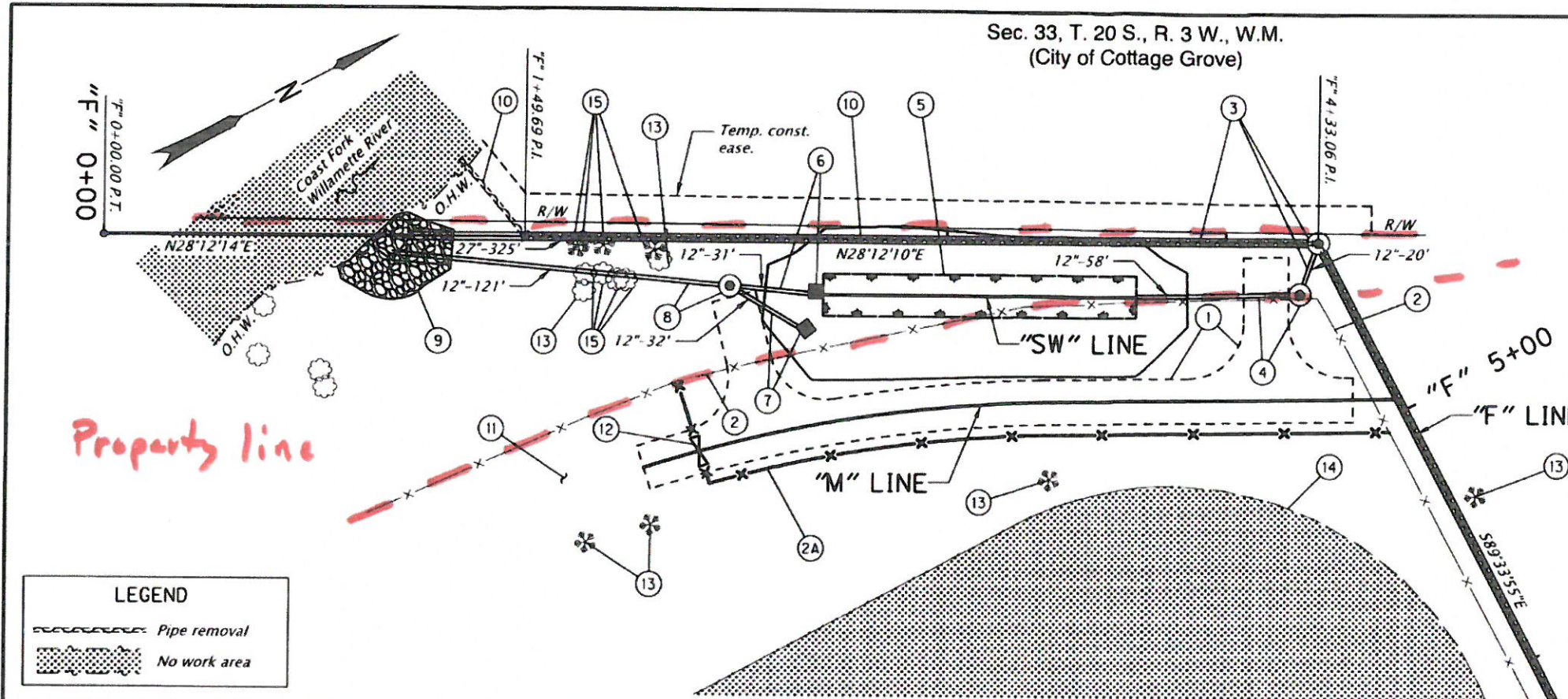
The information on this map was derived from digital databases on the Lane County regional geographic information system. Care was taken in the creation of this map, but is provided "as is". Lane County cannot accept any responsibility for errors, omissions or positional accuracy in the digital data or the underlying records. Current plan designation, zoning, etc., for specific parcels should be confirmed with the appropriate agency. There are no warranties, expressed or implied, accompanying this product. However, notification of any errors will be appreciated.



Cottage Grove Web Map

Lane County, Oregon

Sec. 33, T. 20 S., R. 3 W., W.M.
(City of Cottage Grove)

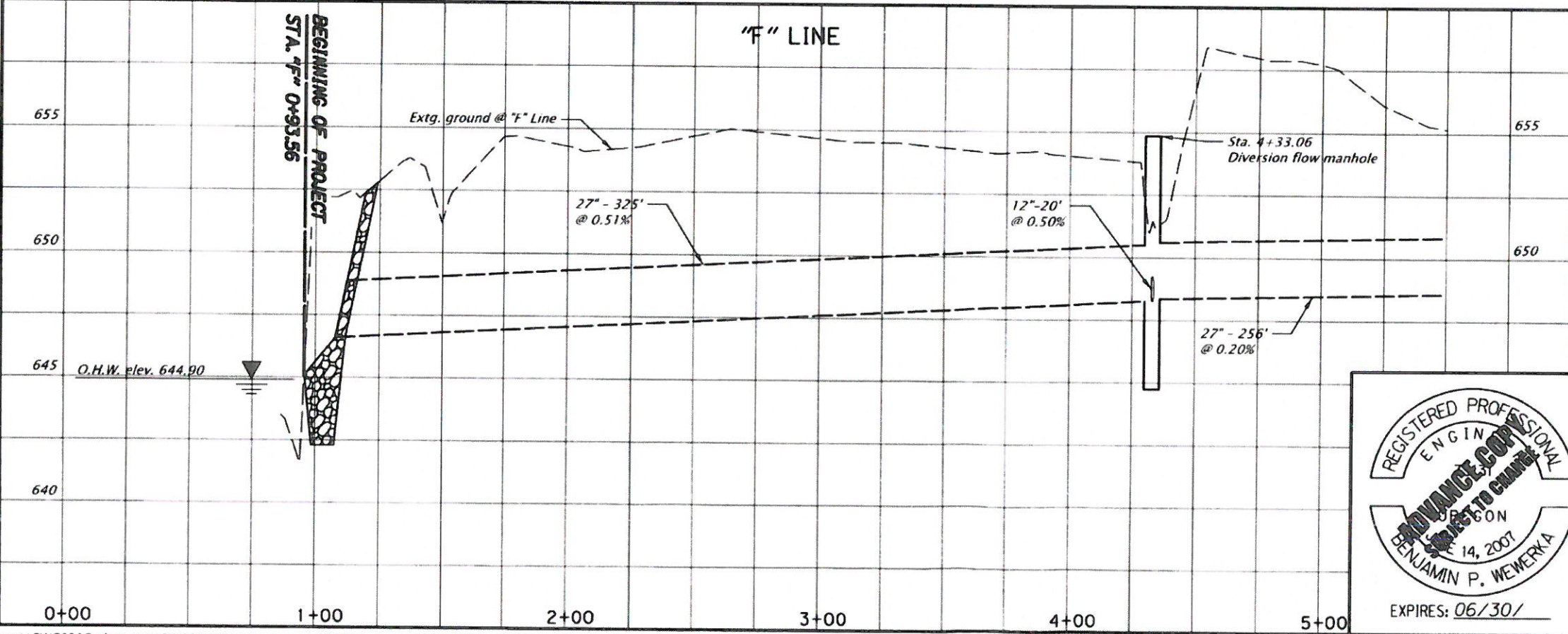


- ① Sta. "M" 3+45.80 to Sta. "M" 6+17.60
Const. maintenance access drive
(For details, see sht. BB02)
- ② Sta. "M" 3+65.26, 26.15' Lt. to
Sta. "M" 6+14.29, 11.72' Rt.
Remove fence - 286'
- ②A Sta. "M" 3+65.26, 26.15' Lt. to
Sta. "M" 6+14.29, 11.72' Rt.
Inst. type CL-6R fence - 267'
(See drg. no. RD815)
- ③ Sta. "F" 4+33.06
Const. diversion manhole
Inst. 27" storm sew. pipe - 325'
10' depth
Inst. 12" storm sew. pipe - 20'
10' depth
Const. sloped pipe end
(For details, see sht. BB02)
(See drg. nos. RD300, RD316,
RD318, RD335, RD336, RD339,
RD344, RD345, RD356, RD386,
RD388, RD390 & RD393)
- ④ Sta. "SW" 3+78.33
Const. sedimentation manhole
Inst. 12" storm sew pipe - 58'
20' depth
Const. sloped pipe end
(For details, see sht. BB03)
(See drg. no. RD340)
- ⑤ Sta. "SW" 2+06.60 to Sta. "SW" 3+19.99
Const. water quality swale "SW"
(For details, see shts. BB01 & BB03)
- ⑥ Sta. "SW" 2+05.10
Const. modified type "D" inlet
Inst. 12" storm sew. pipe - 31'
10' depth
(For details see shts. BB01 & BB02)
(See drg. no. RD370)
- ⑦ Sta. "SW" 2+02.64, 12.64' Rt.
Const. modified type "D" inlet
Inst. 12" storm sew. pipe - 32'
10' depth
(For details, see shts. BB01 & BB02)
- ⑧ Sta. "SW" 1+74.19
Const. storm sew. manhole
Inst. 12" storm sew. pipe - 121'
10' depth
Const. sloped pipe end
(For details, see sht. BB01)
- ⑨ Const. riprap outfall
Loose riprap, class 200 - 70 cu. yd.
Riprap geotextile, type 2 - 60 sq. yd.
(See drg. no. RD317)
(For details, see sht. BB01)
- ⑩ Remove pipe - 318'
- ⑪ Use extg. gravel path to
access maintenance road
- ⑫ Sta. "M" 3+66.23
Inst. 16 foot x 72 inch chain
link double gate
(See drg. nos. RD815 & RD820)
- ⑬ Protect extg. trees
- ⑭ Extg. track surface - no work area
- ⑮ Remove trees - 8

LEGEND

Pipe removal

No work area



REGISTERED PROFESSIONAL
ENGINEER
ADVANCE COPY
ISSUED ON
MAY 14, 2007
BENJAMIN P. WEWERKA
EXPIRES: 06/30/

OBEC CONSULTING ENGINEERS
CORPORATE OFFICE
800 COUNTRY CLUB ROAD
SUITE 100B
EUGENE, OREGON 97401-6089

**FILLMORE STREET
STORMWATER OUTFALL PROJECT**
CITY OF COTTAGE GROVE
LANE COUNTY

Designer: Andy Burke Reviewer: Jaime Jordan
Drafter: Serban Dinca Checker: Ben Weverka

PLAN AND PROFILE SHEET NO. **C01**